

DansConnection Make-Up

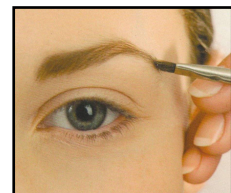
To ensure that our studio has a consistent look, we ask that you please have your own personal make-up kit with the following products listed below.

All of the cosmetics listed below are available at London Drugs, where you will receive a 10% discount on all regular priced items. Please mention DansConnection Dance Studio when purchasing.

Lipstick	Under 10yrs – Pink: Revlon “Sugar Poppy” Cover Girl “ Rose Cashmere” Over 10yrs – Revlon “Volcanic Red” Rimmel “Icon Red” “ Fatal Prestige”
Eye Shadow	Cover Girl – 4-Pan “ Urban Basic”, 3-Pan “ Café au Lait”
Eyeliner	Black Liquid eyeliner for the dancers wearing false lashes Black Pencil eyeliner for dancers not wearing false lashes
Mascara	Black
Blush	Berry Rich-Revlon , Glow (pink)- Covergirl
Foundation	For dancers 8 & up. Please match foundation to your skin tone.
Optional Eyelashes	All senior dancers. Style 100 or 109.

Step By Step - How apply make up

1. Prepare skin by cleansing and moisturizing.
2. With finger or sponge, apply concealer on or two shades lighter than your skin tone under eyes, around nose, and over blemishes and discolorations. Blend lightly, try not to completely rub in the concealer.
3. With finger or sponge apply foundation by dotting forehead, cheeks, chin and nose. Blend lightly over entire face, including the eyelids.
4. With large powder brush, dip brush into loose powder (or pressed powder) and lightly tap off. To set foundation, press powder into skin over entire face.
5. To blend powder brush down and out.
6. To prepare eyebrow, brush with brow and lash comb in an upward and outward motion. Coat slanted brush with an eye shadow color similar to you natural brow colour. With short light strokes, fill in



brows, accentuating arch and extending slightly past the outer corner of the eye.

7. With light shade on your eye shadow palette, sweep colour from eyelid to eyebrow in a back and fourth motion.



8. With medium shade on your eye shadow palette, sweep colour directly above eyelid crease in a back and fourth motion.

9. Using the darkest shade on your eye shadow palette, create a triangle from the outer edge of the pupil to the outermost corner of the eye, blending upwards and outwards. Lid should be lightest near the nose, darkest at the outer corner.

10. Using dark eye pencil, line the upper eyelid as close to the lash line as possible. Starting at the inside corner of the eye; follow the lash line lifting upward and outward to define outer corner of the eye.

11. Using dark pencil follow the shape of the under eye, staying as close to the lash line as possible. Extend past outer eye, following the lower edge of the shadow triangle.

12. To prepare false eye lashes: while still in tray, apply a generous coat of waterproof mascara. Allow time to dry. (senior students only)

13. Curl lashes. Apply generous coat of waterproof mascara to top lashes. Beginning at base of lashes, roll wand up and out from root to tip.

14. Apply false eye lashes. (senior students only)

15. Re-apply eyeliner to cover the line of the false eye lashes. (senior students only)

16. Smile! Apply blush starting at the apple of cheek and brush outwards and upwards. (Leave a 2 finger space from the bottom corner of the eye.)

17. Using the lightest colour in your eye shadow palette, highlight cheekbones, jawbone, brow bone and bridge nose.



18. Using a sharpened lip pencil, define lip line. For lasting colour fill in lips with pencil before applying lipstick.

19. Apply lipstick.

Important Reminders:

- Make-up is required for dress rehearsal, all recitals and performances.
- Also please be advised that all jewelry, underwear, and nail polish **must** be removed for dress rehearsal and recitals.
- DansConnection will not be held responsible for any lost or stolen items. Please leave all jewelry and valuables at home.